

# ARCHAEOLOGY IN HAMILTON: RESULTS FROM EXCAVATIONS OF THE RICHMOND HOMESTEAD IN POOLVILLE, CAMP FIVER

---

Professor Kristin De Lucia, Georgia Banner, McKenna D'Amico, Emily Falk, Jack Hirschle, Harrison Lerner, Blanca Rivas, and Kaleigh Wright, and TA Joseph LaMuraglia

# Project Overview

---

**Research Question:** *What was economic and social life like in the rural communities of 19<sup>th</sup>-century central New York?*



Tuttle Residence and mill dam, Hamilton  
Public Library archives

# Map of Hamilton, 1858

---

Map of Hamilton, Madison  
County, New York, Clark,  
Benjamin A., Friend & Aub.,  
Philadelphia : Benj. A. Clark,  
1858, Library of Congress:  
<https://www.loc.gov/resource/g3804h.la002038/>



1858  
 Jan 14 ~~To Wm H. Boop~~  
 Cash lent \$ 15.00

20<sup>th</sup> ~~Henry Norton~~  
 Cash lent \$ 28

~~Benjamin Carter~~ 2.00

26 ~~Yberry Berry~~  
~~To GR~~ \$ 40.00

27<sup>th</sup> ~~Mrs Jackson~~  
 Cash lent X 33

29<sup>th</sup> ~~Abel Curtis~~  
 Cash lent \$ 20

~~Feb 1st~~ ~~off Norton~~  
 Cash lent \$ 10

13<sup>th</sup> ~~Orvin Brunsden~~  
 Cash lent 17.00

17 ~~Linnam~~ ~~Curtis~~  
 to GR

Feb 19<sup>th</sup> ~~Abel Curtis~~  
 Cash lent

24<sup>th</sup> ~~JR Bennett~~  
 Cash lent

26<sup>th</sup> ~~James Overington~~  
 Cash lent

27 ~~William Bar~~  
 etc

~~Feb~~ ~~Grub~~ ~~Curtis~~

~~Mrs Thompson~~

March 11<sup>th</sup> ~~W B Gilbert~~  
 Cash paid Richmond

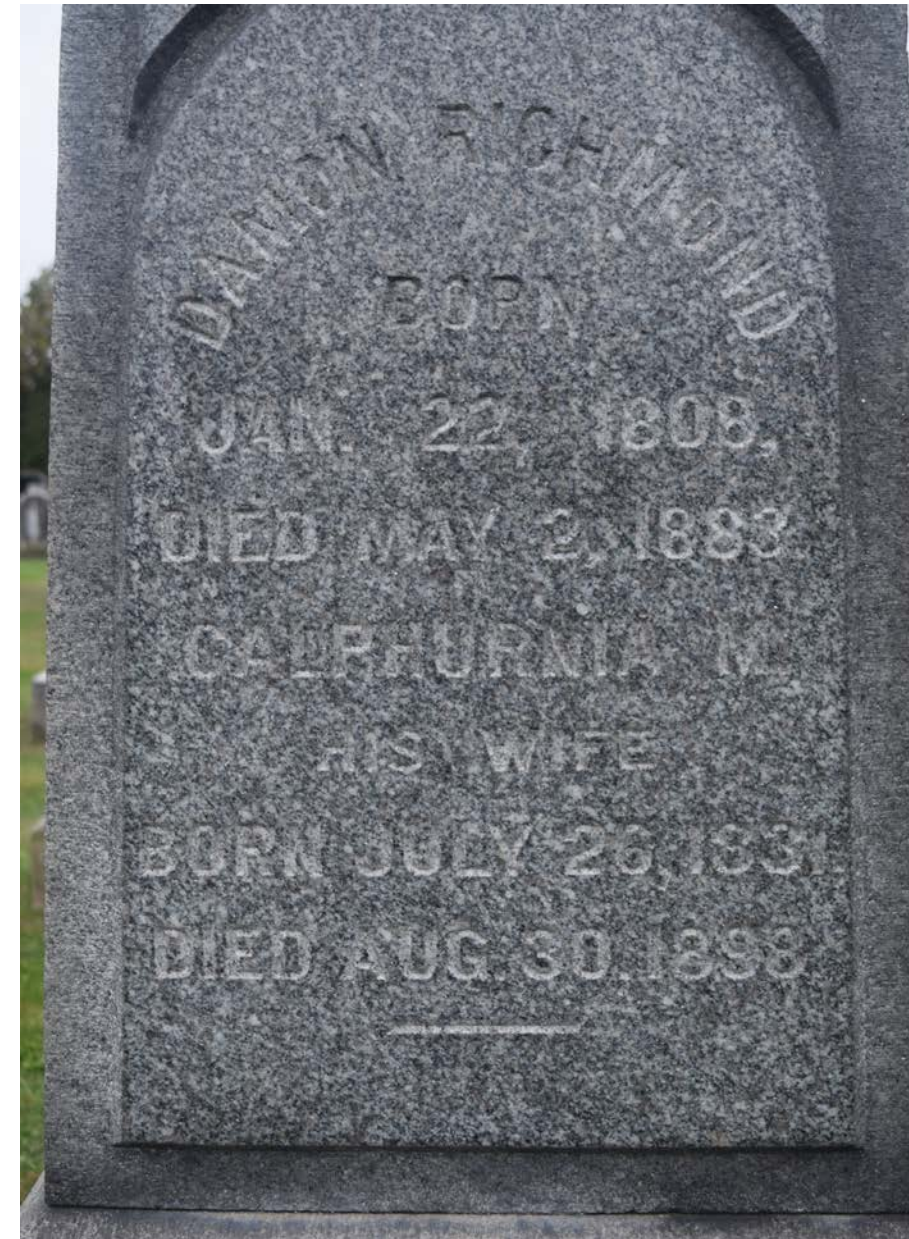
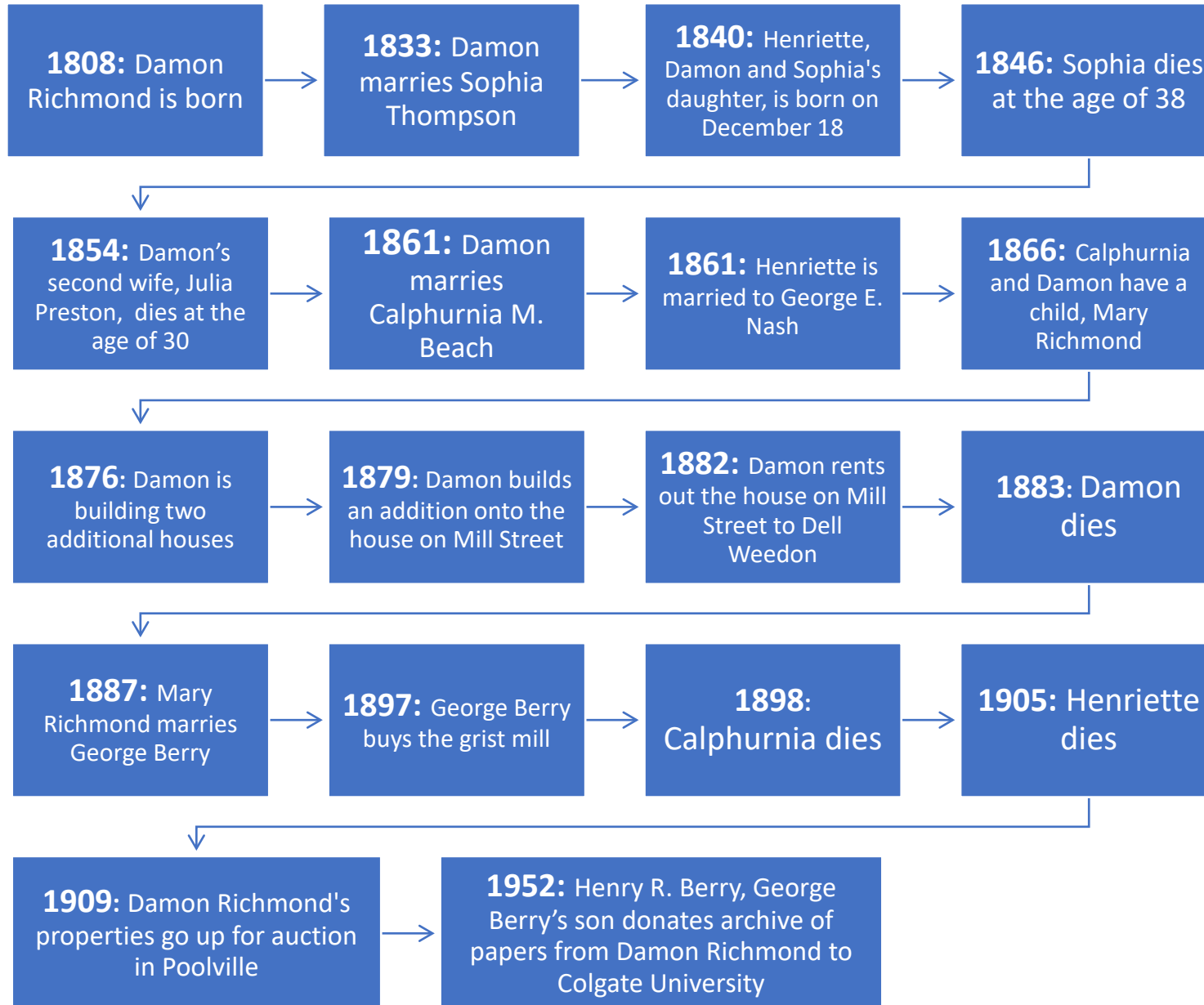
# Background and Archival Research

**Historical Records:** Maps, census records, court documents, gravestones, documented oral histories (HMC), the Damon Richmond archives at Colgate, tax records, newspapers, etc.

Account books, Damon Richmond Archive, Colgate University, 1858



# Personal Life



The background is a dark, textured surface with various light-colored sketches. On the left, there's a large sketch of a microscope. Above it, a globe of the Earth is visible. Below the microscope, there are sketches of books and a stack of papers. On the right side, there are sketches of a percentage sign, an exclamation mark, and a right-pointing arrow. The overall theme is scientific and archaeological research.

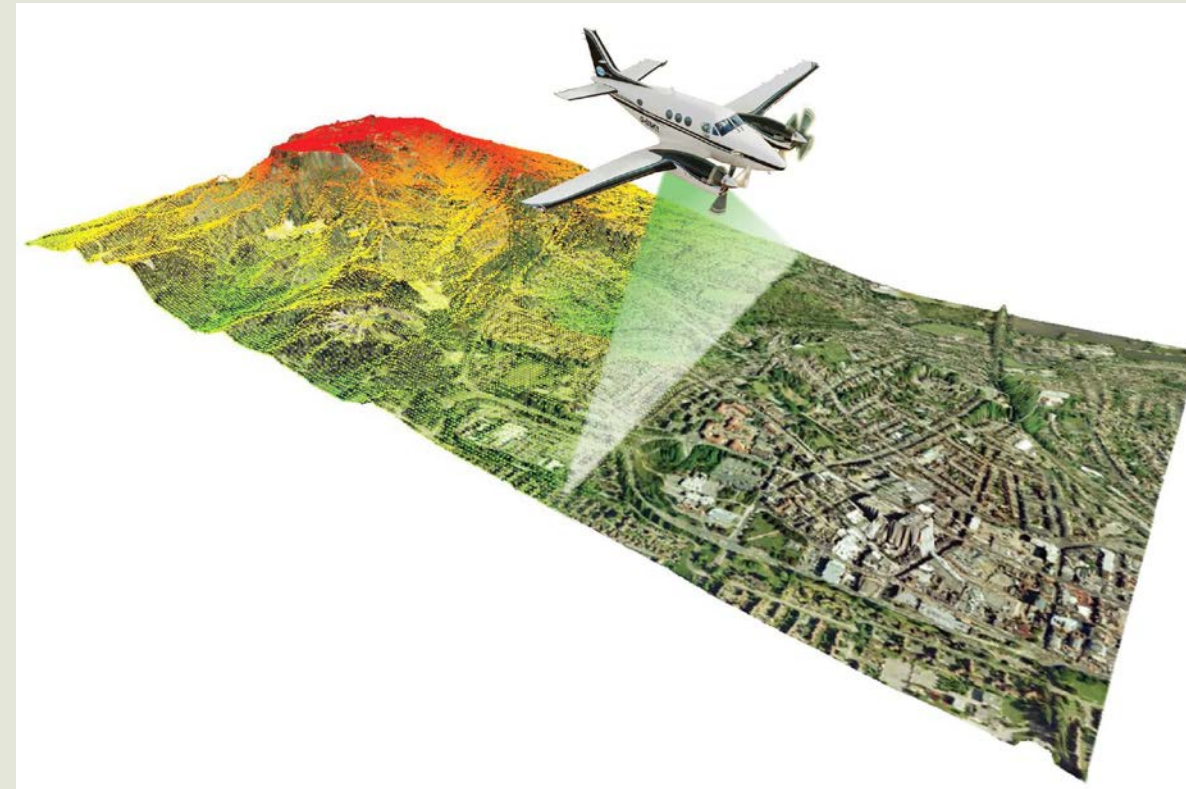
# Research Methods

Archaeological Survey and Excavation



# Archaeological Survey and LiDAR

- **LiDAR Overview:**
  - Acronym: Light Detection and Ranging
  - Remote sensing technology using laser light
- **Applications:**
  - Revolutionizing archaeology, mapping terrain, urban planning, and forestry
- **Functionality:**
  - Creates highly accurate 3D maps, revealing hidden features
- **Contributions:**
  - Invaluable for detailed landscape analysis and uncovering secrets underground



# LiDAR in Archaeology

- **Key Features:**

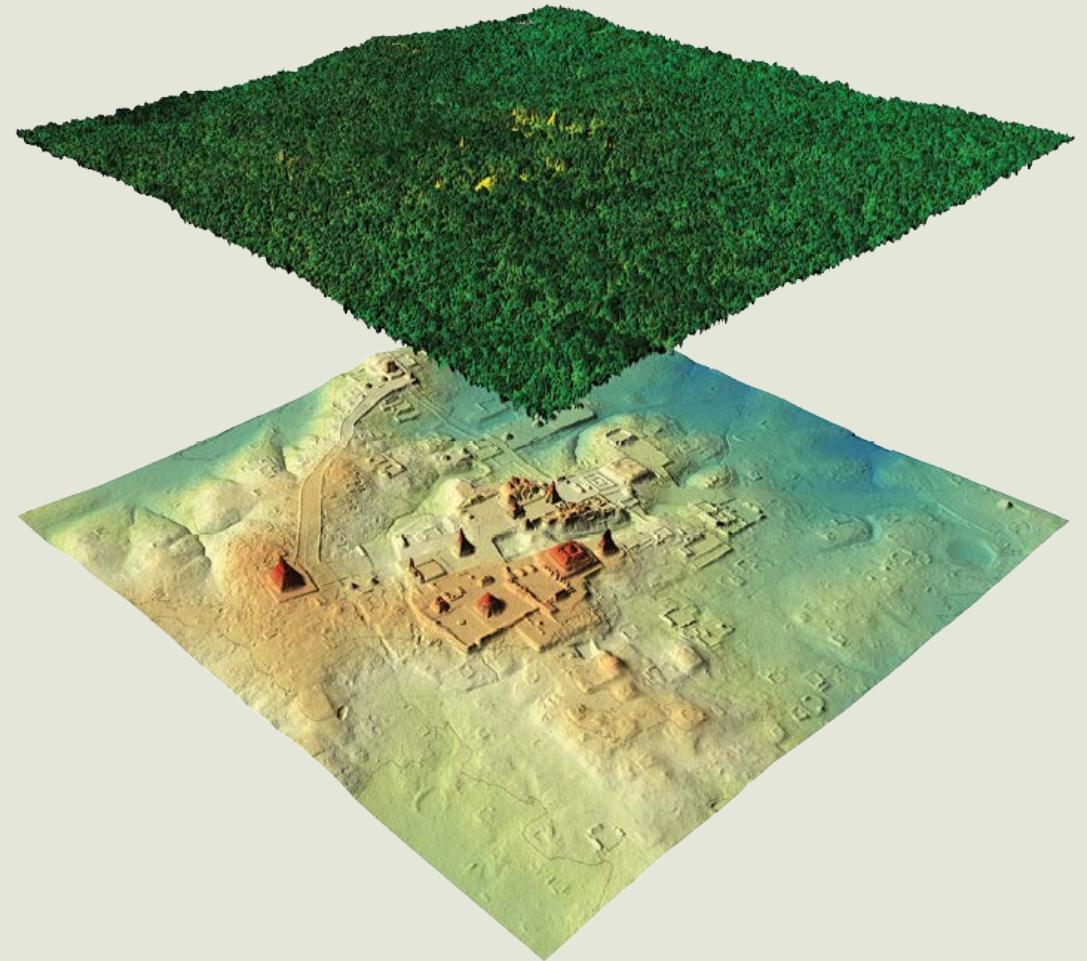
- Penetrates vegetation, generates precise ground models

- **Benefits:**

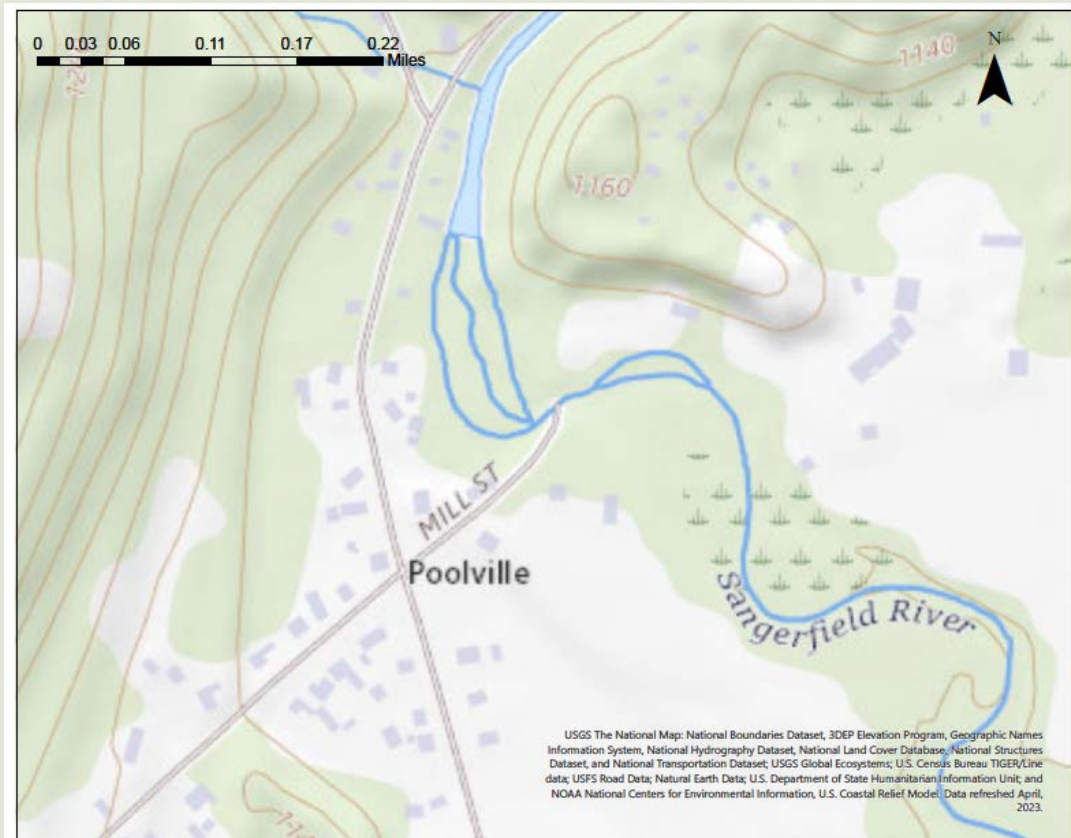
- Opens new avenues for discovering ancient structures and landscapes
- Enables swift, non-destructive data acquisition

- **Significance:**

- Provides researchers a powerful tool for uncovering hidden histories



# The Archaeological Survey in Poolville



Modern USGS map of Poolville



1858 map of Poolville

# The Archaeological Survey in Poolville

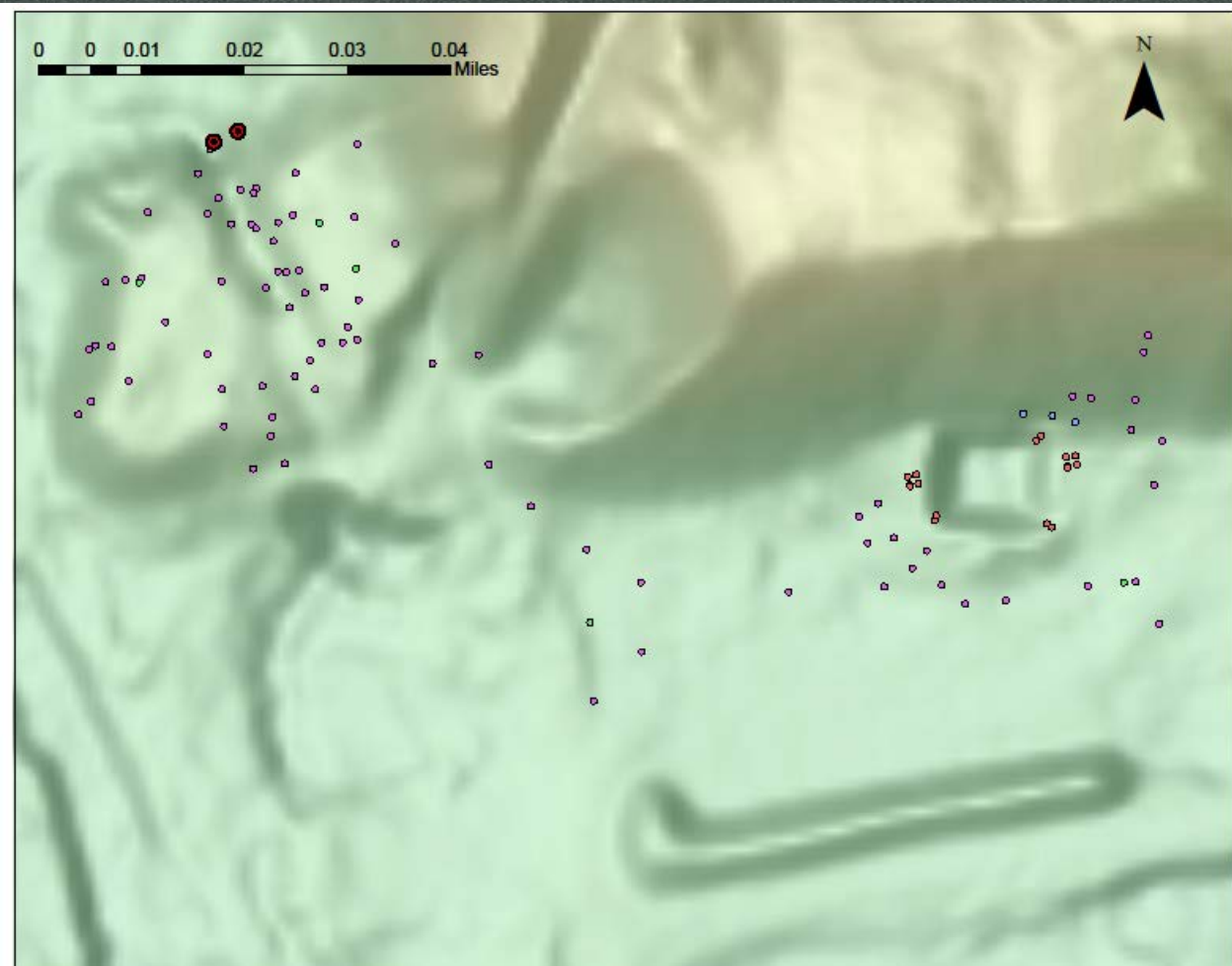


Satellite image of Poolville



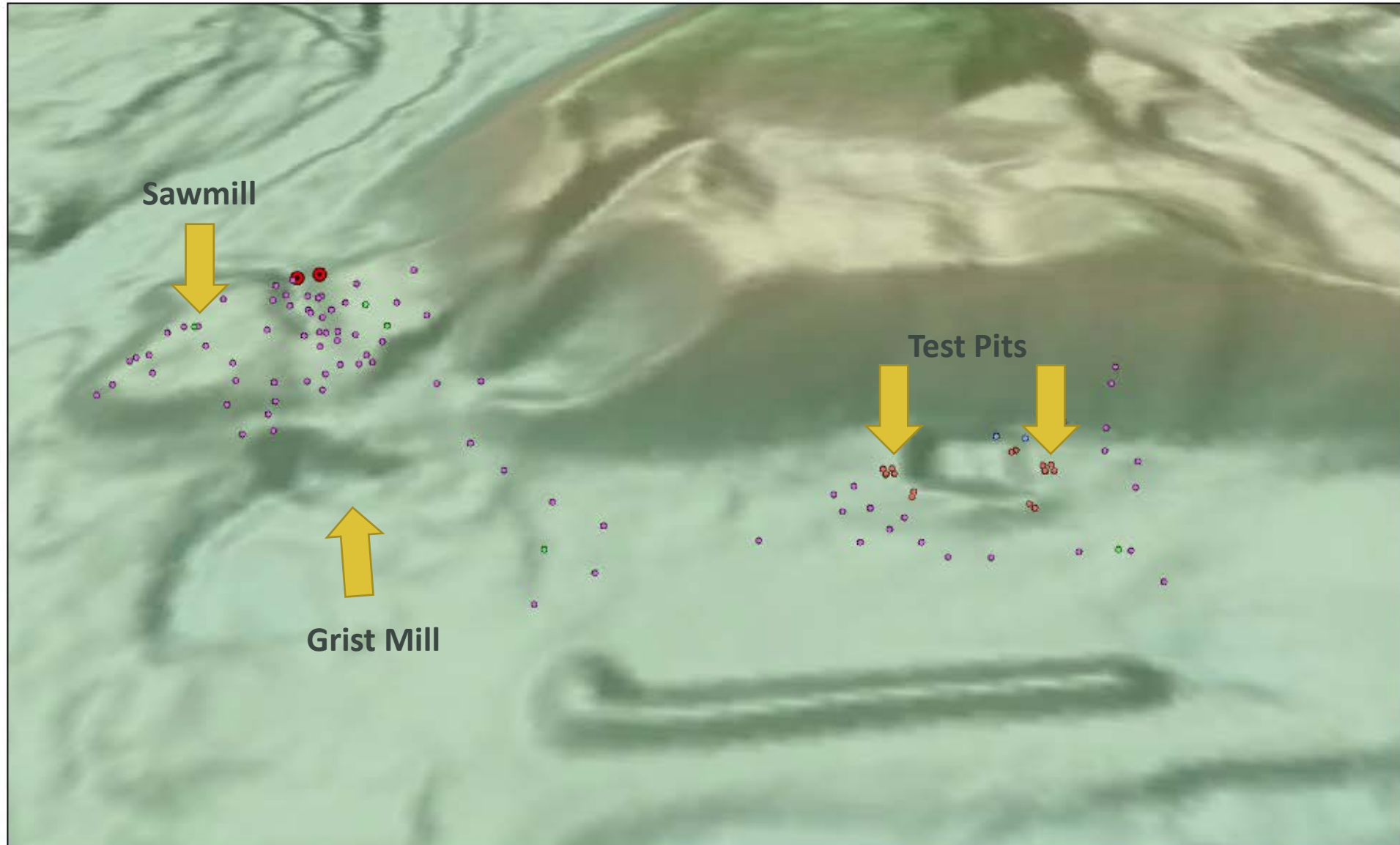
LiDAR image of Poolville

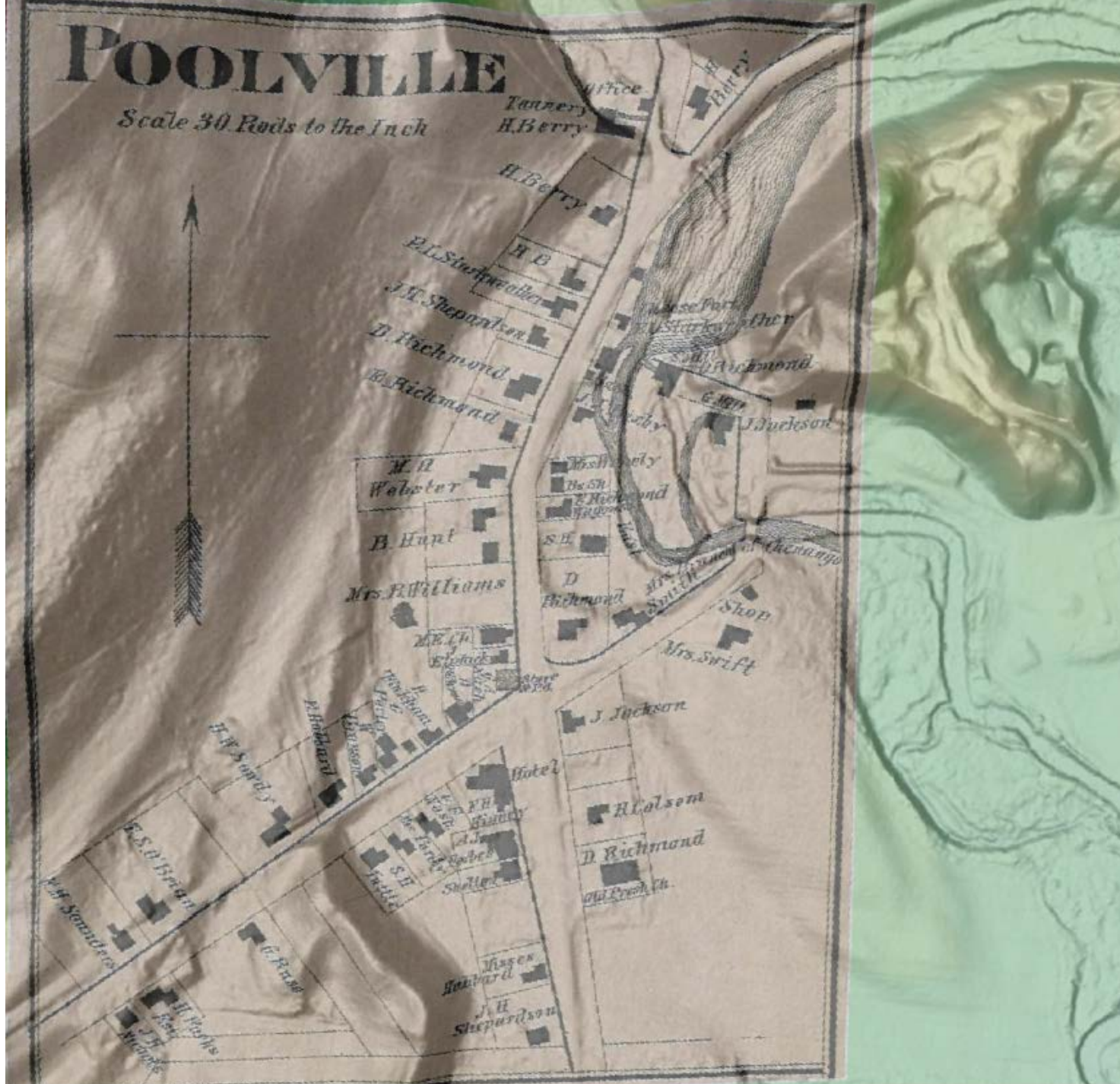
# Limitations: Using LiDAR as a guide for survey



- LiDAR has advantages but limits in archaeological surveys.
- Team used laser theodolite for ground-level precision.
- Laser theodolite emits beams, measures angles/distance for accurate mapping.
- Approach combines LiDAR's broad coverage with laser theodolite's scrutiny.
- Aims to clarify unclear archaeological features.

# Results





# Lidar and 1875 Map

**1875** Lionel Pincus and Princess Firyal Map Division, The New York Public Library. "Hamilton [Township]; Town of Hamilton Business Notices; Poolville [Village]" *The New York Public Library Digital Collections*. 1875.

<https://digitalcollections.nypl.org/items/510d47e3-6e69-a3d9-e040-e00a18064a99>





# Thanks to....

Upstate Institute, Colgate University, the Department of Sociology, Camp Fiver and Christie Ko, Mary Dinski, Joe Flatly, Bruce Mosely, Matthew Urtz, Joan Prindle, Xena Becker, Santiago Juarez, Hannah Lau, Anthony Farley, and all of the community members of Poolville!



ANTH 253 Class